



coltène®  
**PRESIDENT**

# The Art of Impressions

## Products and technical survey



# coltene® PRESIDENT

In the Coltene/Whaledent A.G. headquarters in Altstätten (Switzerland) the President addition-cured silicone impression material is developed, produced and distributed all over the world.

## A short glance into our enterprise.

### Development

---



We have invested heavily in the latest state of the art technology; high quality is assured.



### Production

---



Our production is performed under the highest standard of hygiene and care. Steady and continuous quality control takes place be it either during the compounding of President impression material or during the filling of cartridges.



### Distribution

---



To despatch President impression material at the right time to the right place is just as important as the professional technical user support.



# Techniques and System survey



Single phase impression

---



One step double mix impression

---



Two step putty wash impression

---



Functional impression

---



Transfer coping impression

---



Bite registration

---



microSystem™

---



JET System/Impression trays

---



System 75™

---



Putty / tube material / System 360

---



Cartridge system overview

---

# Single phase impression

## PRESIDENT System 75™ MonoBody

- Indications:**
- Crown and bridge, inlays, onlays and implants
  - Combined, partial and complete prosthetics
  - Relining



### "Stackable" application

PRESIDENT System 75™ MonoBody's "stackability" builds up during polymerization. Fill the tray first, then the syringe.

! For a secure adhesion of the impression material coat the tray with Coltène® Adhesive first.

### Efficient

The System 75™ cartridge fills an impression syringe quickly.

### Excellent flow properties

During application the material has a thixotropic behavior and thus optimal flow properties under pressure. Meanwhile the tray material has developed the necessary "body".



## ORDER INFORMATION

### Products for single phase impression

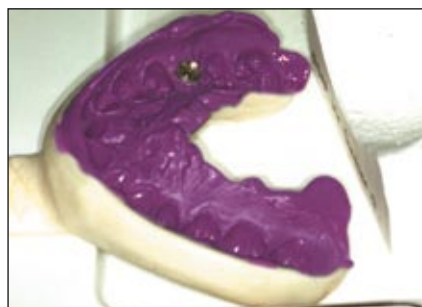
6752	<b>PRESIDENT System 75™ MonoBody</b> Single Pack 75 ml cartridge Mixing Tips	2 pc. 8 pcs.
6002	<b>PRESIDENT microSystem™ light body</b> Single Pack 25 ml cartridge Mixing Tips, small Oral Tips	4 pcs. 20 pcs. 20 pcs.
6012	<b>PRESIDENT microSystem™ regular body</b> Single Pack 25 ml cartridge Mixing Tips, medium Oral Tips	4 pcs. 20 pcs. 20 pcs.

### Accessories

6270	microSystem™ dispenser MKII	1 pc.
4410	Coltène Adhesive for tray 10 ml bottle	1 pc.
6202	MT/GREEN/GREEN/WHITE/70/S	40 pcs.
6962	MT/CLEAR/CLEAR/WHITE/73/S	40 pcs.
6214	MT/CLEAR/CLEAR/WHITE/70/S	40 pcs.
6210	Oral Tips	100 pcs.

#### Tip:

**PRESIDENT MonoBody** can also be used for the double mix technique as a "tray" material. As a "wash" material it is recommended to use either **PRESIDENT microSystem™ light body** or **regular body**.



#### Highest precision

Due to the light pressure required during positioning, the material flows and registers even the finest details of the preparation.

PRESIDENT MonoBody is neutral in taste and odour - preventing increased salivation and gag reflex. Allergic reactions are not known.

#### Tensile strength

Due to high elastic recovery and tensile strength PRESIDENT MonoBody impressions can be removed without residue and a precise final result is guaranteed.

# One step double mix impression techniques

## PRESIDENT System 75™ heavy body and PRESIDENT microSystem™ light body or regular body

- Indications:**
- Crown and bridge, inlays, onlays and implants
  - Combined, partial and complete prosthesis
  - Relining



### Easy tray filling

Fill the tray with President System 75™ heavy body quickly and easily thanks to the QUADRO mixing tip. Find out more about this extra-ordinary system on pages 20 and 21.

President heavy body is surface activated and thixotropic with fast pressure build up so that the wash material is easily driven into the clinically critical areas.



### Direct intra-oral application

After filling the tray with President System 75™ heavy body, President microSystem™ light or regular body is applied directly onto the preparation.

All President wash materials are surface activated for highest impression precision in a humid environment. Just choose your favoured viscosity.



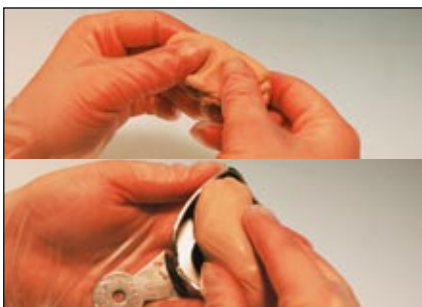
### Hold in place

During the curing phase the tray must be held in place with light pressure. This is sufficient to allow the wash material to flow into the sulcus.



## PRESIDENT putty soft and PRESIDENT microSystem™ light body or regular body

- Indications:**
- Crown and bridge, inlays, onlays
  - Combined and partial prosthetics



### Convenient mixing

PRESIDENT putty soft is ideal for the one step technique in combination with President Jet or microSystem™ light / regular body. (When using President fast putty use PRESIDENT fast wash). President putty soft mixes quickly to a homogeneous form and does not leave oily residue.



### Surface activated

While your assistant fills the tray you can apply the "wash" material of your choice onto the preparation (microSystem™ light body is shown). Due to the surface activation the material is perfectly suitable for a humid mouth environment.



### Highest accuracy

The pressure effect of President putty soft and the matched flow properties of President light and regular body give finest details deep into the sulcus without displacement.

## ORDER INFORMATION

### Products for one step double mix impression

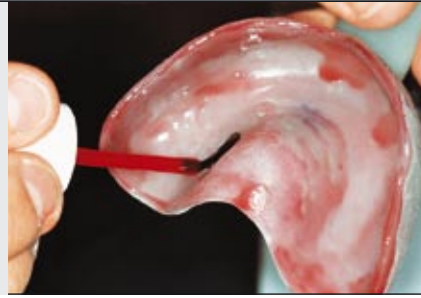
- |      |  |         |
|------|--|---------|
| 6702 | <b>PRESIDENT System 75™</b><br><b>heavy body</b>     |         |
|      | Single pack  |         |
|      | 75 ml cartridge                                      | 2 pcs.  |
|      | QUADRO Mixing Tips                                   | 8 pcs.  |
| 6002 | <b>PRESIDENT microSystem™</b><br><b>light body</b>   |         |
|      | Single pack  |         |
|      | 25 ml cartridge                                      | 4 pcs.  |
|      | Mixing Tips, small                                   | 20 pcs. |
|      | Oral Tips  | 20 pcs. |
| 6012 | <b>PRESIDENT microSystem™</b><br><b>regular body</b> |         |
|      | Single pack  |         |
|      | 25 ml cartridge                                      | 4 pcs.  |
|      | Mixing Tips, medium                                  | 20 pcs. |
|      | Oral Tips  | 20 pcs. |

### Accessories

- |      |                             |         |
|------|-----------------------------|---------|
| 6270 | microSystem™ dispenser MKII | 1 pc.   |
| 4410 | Coltène Adhesive for tray   |         |
|      | 10 ml bottle                | 1 pc.   |
| 6962 | MT/CLEAR/CLEAR/WHITE/73/S   | 40 pcs. |

#### Tip:

Coat the tray with Coltène® adhesive to provide additional adhesion for the tray material onto the tray side walls.



#### Dimensional stability

Due to the high tensile strength details remain unchanged even in undercut areas.

Harmonized viscosities allow for great accuracy in the preparation margins without driving the "wash" material into the buccal sulcus. The high dimensional stability of President A-Silicones assure precision over a long period.

For further system advantages please refer to the information: System 75™ and microSystem™.



#### Easy removal

The high tensile strength and elasticity enable a smooth removal even in the case of undercuts.



President is also available in the quick setting *fast* version.

# Two step putty wash impression

**PRESIDENT putty soft and PRESIDENT JET or microSystem™**  
**light body or regular body**

- Indications:**
- Crown and bridge, inlays, onlays
  - Combined and partial prosthetics



## Primary impression



### Dosing

The mixing ratio of all President putty is 1:1.

Make sure not to swap the measuring scoops from one pot to the other. This will prevent cross - contamination.

### Convenient mixing

All PRESIDENT putties are noted for convenient mixing without oily residue. The consistency of base and catalyst are well balanced to provide quick and homogeneous mixing.

Always use base and catalyst from the same batch (number is shown on the base).

**LOT** = **LOT**

### Positioning

Position the primary impression and hold in place during setting phase.

## Wash impression



### Rinse thoroughly

Wash the primary impression thoroughly with warm water (to prevent "shock" cooling), dry, and cut drainage channels to prevent compression of the "wash" material and subsequent close-fitting restorations.

### Fine impression

Apply President Jet or microSystem™ light / regular body onto the preparation. Due to surface activation and controlled flow, impression defects caused by saliva and blood residue can be avoided. These properties assure complete reproduction and the highest accuracy.

### Fine detail reproduction

All President putties and "wash" materials achieve controllable and accurate end results. The materials are balanced in consistency, setting time and readability.



**Tip:**

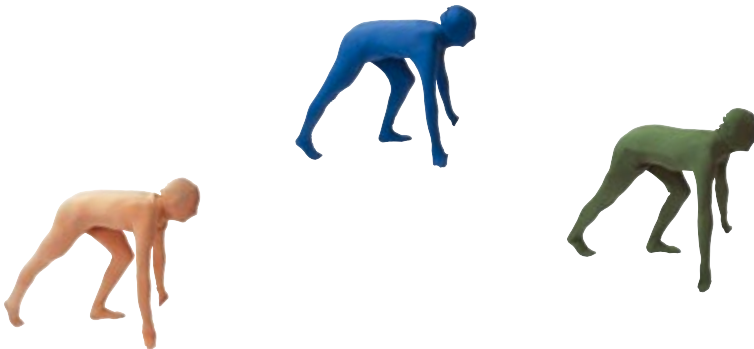
To make sure that enough "wash" material is used apply some to the tray material prior to the application onto the preparation.



PRESIDENT products are noted for a very high adhesion between tray and impression materials.

*fast*

President is also available in the quick setting fast version.



**Tip:**

For modelling we recommend HYGENIC® Boxing Wax.



**ORDER INFORMATION**

**Products for two step putty wash impression**

4617	<b>PRESIDENT putty</b> Base and catalyst	each 300 ml
4843	<b>PRESIDENT putty soft</b> Base and catalyst	each 300 ml
4632	<b>PRESIDENT fast putty soft</b> base and catalyst	each 300 ml
4600	<b>PRESIDENT JET light body</b> Single pack 48 ml cartridge JET Mixing tips	2 pcs. 12 pcs.
4605	<b>PRESIDENT JET regular body</b> Single pack 48 ml cartridge JET Mixing tips	2 pcs. 12 pcs.

**Accessories**

4830	MT/CLEAR/CLEAR/WHITE/79/S	48 pcs.
4832	MT/CLEAR/CLEAR/WHITE/86/S	48 pcs.
4831	JET Oral Tips	96 pcs.
4420	Cutting knife righthanded	1 pc.
4421	Cutting knife lefthanded	1 pc.
4410	Coltène Adhesive for tray 10 ml bottle	1 pc.
H00815	<b>HYGENIC®</b> Boxing Wax regular 1,6 × 38,4 × 305 mm	450 g
H00837	<b>HYGENIC®</b> Boxing Wax regular	2,25 kg
H00816	<b>HYGENIC®</b> Boxing Wax extra thin 1 × 38,4 × 305 mm	450 g
H00838	<b>HYGENIC®</b> Boxing Wax extra thin	2,25 kg

# Functional impression

**PRESIDENT System 75™ heavy body, PRESIDENT JET or microSystem™ light body or regular body**

- Indications:**
- Combined, partial and complete prosthetics
  - relining



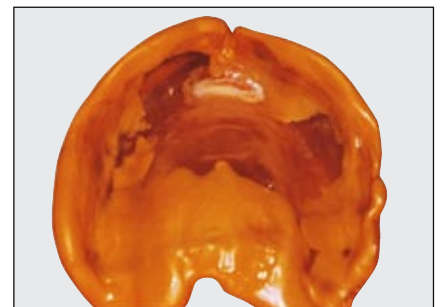
## Fast tray loading

After coating the tray rim with Coltène Adhesive create the functional rim with President System 75™ heavy body. You always have the exact amount available and the QUADRO mixing tip makes extrusion of the material more convenient quick and easy.



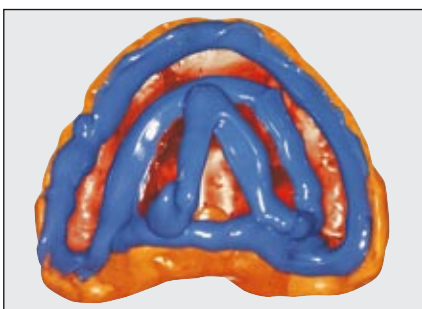
## Positioning

Position the custom-made tray. The heavy body viscosity is outstandingly suitable to reproduce all functional movements in detail.



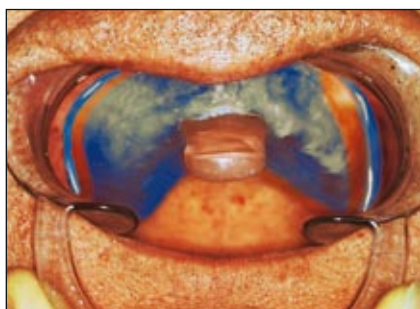
## Surface activated

PRESIDENT System 75™ heavy body is surface activated and thus exhibits optimal contact with the mucous membrane inside the humid mouth environment.



## Rinsing

After having cleaned and dried the functional rim impression with warm water, coat the base of the tray with adhesive and apply the wash material. You can either choose President light or regular body (or our wash materials of the microSystem™ range).

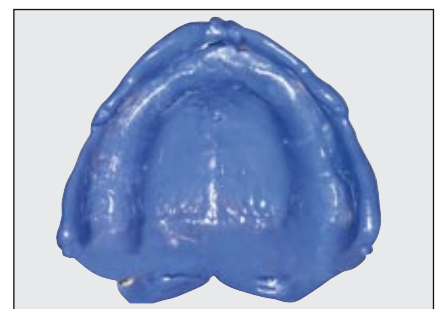


## Empreinte secondaire

Press tray slowly into the final position and again help the patient to perform the appropriate functional movements to optimise the secondary impression.

Due to the high suction, noticeable during removal, an optimum result is obtained.

The inert raw materials of A-Silicones protect the mucous membranes from irritations. Allergies are not known.



## Dimensional stability

Highest dimensional stability ensures precision over a long time.

Even areas with little mucous tissue and palatal areas can be precisely reproduced with President regular body. The correct viscosity eliminates pressure spots and mucous membrane irritation.

For further system advantages please refer to the information part System 75™ and Jet System.

## ORDER INFORMATION

### Products for functional impression

- 6702 **PRESIDENT System 75™ heavy body**  
Single pack  
75 ml cartridge  
QUADRO Mixing Tips 2 pcs.  
8 pcs.
- 4600 **PRESIDENT JET light body**  
Single pack  
48 ml cartridge  
JET Mixing Tips 2 pcs.  
12 pcs.
- 4605 **PRESIDENT JET regular body**  
Single pack  
48 ml cartridge  
JET Mixing Tips 2 pcs.  
12 pcs.
- 6002 **PRESIDENT microSystem™ light body**  
Single pack  
25 ml cartridge  
Mixing Tips, small  
Oral Tips 4 pcs.  
20 pcs.  
20 pcs.
- 6012 **PRESIDENT microSystem™ regular body**  
Single pack  
25 ml cartridge  
Mixing Tips, medium  
Oral Tips 4 pcs.  
20 pcs.  
20 pcs.

### Accessoires

- H00390 **HYGENIC® Hygon tray material**  
Polymer 450 g in various shades and sizes available (inc. powder and liquid)
- 4440 **PSI Pressure Spot Indicator**  
65 ml base and aktivator 1 pc.
- 4410 **Coltène Adhesive for trays**  
10 ml bottle 1 pc.

#### Tip:

After denture production use the **Coltène® Pressure Spot Indicator** which provides easy recognition of pressure spots.



Apply PSI to the denture.



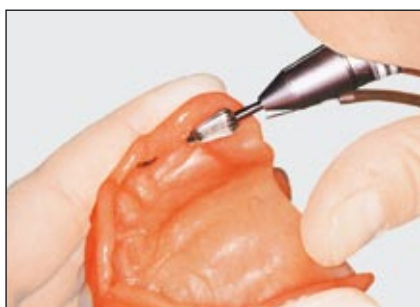
Place denture in the mouth.



Set PSI impression - marking of pressure spots.



Removal of the PSI impression.



Grinding of denture where indicated.



# Transfer coping impressions

## PRESIDENT System 75™ heavy body

- Indications:**
- Crown, bridge and telescopes
  - Relining



### Easy tray filling

Fill the tray with President System 75™ heavy body quickly and easily thanks to the QUADRO mixing tips. Find out more about this out-standing system on pages 20 and 21.

Balanced thixotropy and flow gives the pressure needed to drive the „wash“ into clinically critical areas.

Do not forget to always coat the tray with Coltène® Adhesive.



### Finest detail reproduction

Hold in place during the mouth setting time after positioning.

The material registers all details of the metal framework and holds it in the desired position.



### Securely fixed

Due to the detailed recording of the framework by President System 75™ heavy body the framework is securely fixed in the impression and remains in this position during removal.

## ORDER INFORMATION

### Products for transfer coping impressions

- 6702 **PRESIDENT System 75™ heavy body**  
Single pack 2 pcs.  
75 ml cartridge 8 pcs.  
QUADRO Mixing Tips
- 6752 **PRESIDENT System 75™ MonoBody**  
Single pack 2 pcs.  
75 ml cartridge 10 pcs.  
Mixing Tips

### Accessories

- 6975 System 75™ plunger 1 pc.
- 6962 QUADRO Mixing Tips for System 75™ 40 pcs.
- 4410 Coltène Adhesive for trays 10 ml bottle 1 pc.

#### Tip:

Coat appropriate parts of the framework with Coltène® adhesive to avoid laboratory generated retention "pearls" even in extreme cases. It can be easily removed with alcohol by the technician after completion of the model.



#### Tip:

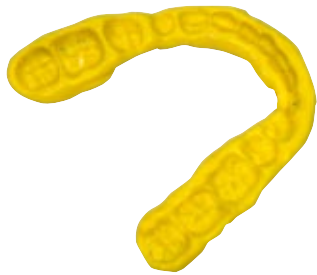
Fill crowns and bridges with Coltène® Pressure Spot Indicator to check the fit of the restoration prior to final cementing.



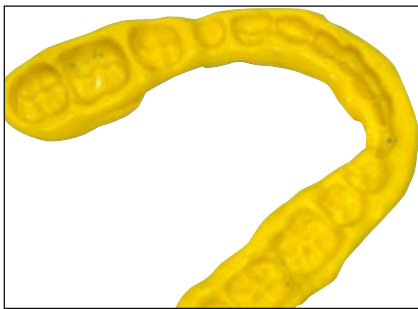
For transfer coping impressions you can also use President System 75™ MonoBody if preferred.

# Bite registration

PRESIDENT JET Bite, JET Bite hard or microSystem™ JET Bite and microSystem™ JET Bite hard



## Conventional method



### Easy, fast and handy

Easy handling, ideal thixotropic properties and fast curing eases treatment for you and your patient.

### Optimum final result

The perfect bite resistance gives accurate bite registration. The material is easy to disinfect, does not swell and the technician appreciates the good grinding and cutting. The material shows no „rebounding properties“ during articulation.



For working time and final hardness you have the choice between two formulations: PRESIDENT JET Bite or JET Bite hard.

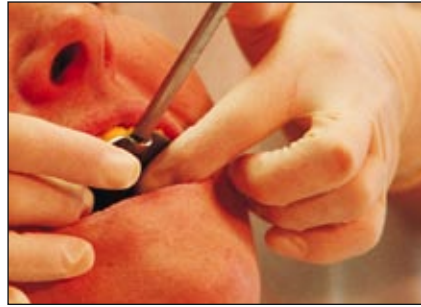
<i>JET Bite</i>			<i>JET Bite hard</i>	
Mixing time	5 sec.	<div style="background-color: yellow; padding: 5px; text-align: center;"> <b>For faster application and higher end hardness choose JET Bite hard.</b> </div>	Mixing time	5 sec.
Max. working time	50 sec.		Max. working time	30 sec.
Time in the mouth	90 sec.		Time in the mouth	60 sec.
Total setting time	140 sec.		Total setting time	90 sec.
End hardness	78 shore A after 15 min.		End hardness	90 shore A after 15 min.

## Method for use of the face bow



### Easy application

Direct application of Jet Bite or Jet Bite hard onto the registration tray.



### Easy positioning

The set material positions the registration tray.



### Aligning

Adjusting of the face bow is simplified thanks to the stable registration.



### Articulation

When articulating, the technician appreciates that the material doesn't rebound and exhibits a high dimensional stability.

### Tip:

For both techniques use the practical spreader tip for quick and easy application of the material. They are included in the kit.



## ORDER INFORMATION

### Products for bite registration

4655	<b>PRESIDENT JET JET Bite</b>	
	Single pack	
	48 ml cartridge	2 pcs.
	JET Mixing Tips	12 pcs.
	Spreader Tips	12 pcs.
6022	<b>PRESIDENT microSystem™ JET Bite</b>	
	Single pack	
	25 ml cartridge	4 pcs.
	Mixing Tips, medium	20 pcs.
	Spreader Tips	20 pcs.
4685	<b>PRESIDENT JET JET Bite hard</b>	
	Single pack	
	48 ml cartridge	2 pcs.
	JET Mixing Tips	12 pcs.
	Spreader Tips	12 pcs.
6042	<b>PRESIDENT microSystem™ JET Bite hard</b>	
	Single pack	
	25 ml cartridge	4 pcs.
	Mixing Tips, medium	20 pcs.
	Spreader Tips	20 pcs.

### Accessories

4830	MT/CLEAR/CLEAR/WHITE/79/S	48 pcs.
6214	MT/CLEAR/CLEAR/WHITE/70/S	40 pcs.
6233	Spreader Tips	100 pcs.

### HYGENIC® Bite Wax

H00839	yellow	50 pcs.
H03365	green without metal	36 pcs.
H00825	blue laminated with metal foil	24 pcs.

# PRESIDENT microSystem™



Compare the size:  
left: microSystem™, right: conventional 48 ml cartridge

The compact design of microSystem™ makes direct intra - oral application easy.



Using microSystem™ you can choose President light and regular body as "wash" materials as well as President Jet Bite and Jet Bite hard as bite registration materials.

The "wash" impression materials are compatible with President System 75™ and President putty.



The stainless steel dispenser is easy to clean and can be sterilised (autoclave 135°C / chemiclave).  
The compact dimensions make it handier to use and particularly suitable for the smaller "grip".



## 25% more impressions means lower expenses

PRESIDENT microSystem™ minimises waste material with each impression with its specially developed mixing tips.

### Conventional cartridges

(48 ml / 50 ml)



7-8 impressions

### microSystem™ cartridges

(2 cartridges of 25 ml each)



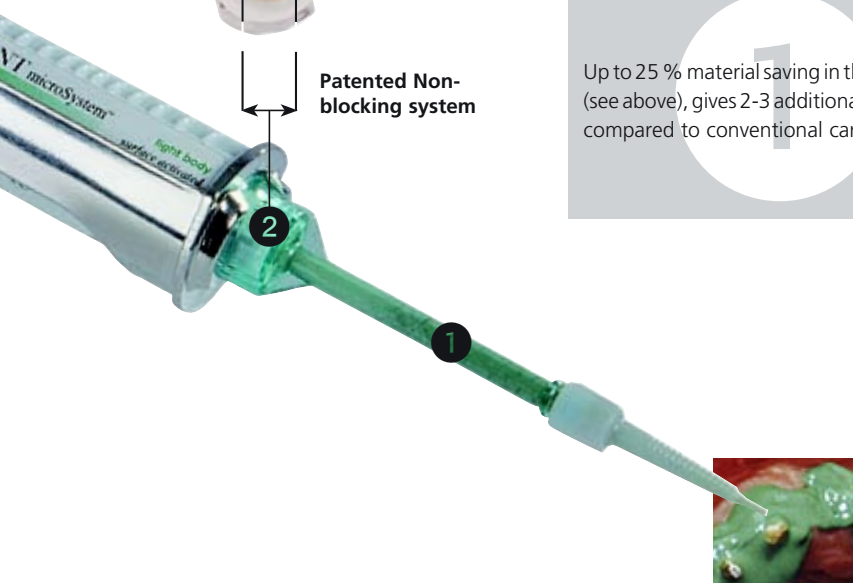
10 impressions

The patented Coltène President microSystem™ cartridges and mixing tips avoid contamination. Outflow apertures are set apart and are combined with a safety reservoir which avoids undesirable cross-contamination of material flowing back. A premature contact of both materials and subsequent undesirable polymerisation is prevented with the mixing tips.



Patented Non-blocking system

Up to 25 % material saving in the mixing tips (see above), gives 2-3 additional impressions compared to conventional cartridges.



direct application

## ORDER INFORMATION

### PRESIDENT microSystem™

#### 6001 PRESIDENT microSystem™

Starter Kit	1 pc.
25 ml cartridge light body	1 pc.
25 ml cartridge regular body	1 pc.
25 ml cartridge JET Bite	1 pc.
Mixing Tips, small	5 pcs.
Mixing Tips, medium	10 pcs.
Oral Tips	10 pcs.
Spreader Tips	5 pcs.
microSystem™ dispenser	1 pc.

#### 6002 PRESIDENT microSystem™ light body

Single pack	
25 ml cartridge	4 pcs.
Mixing Tips, small	20 pcs.
Oral Tips	20 pcs.

#### 6012 PRESIDENT microSystem™ regular body

Single pack	
25 ml cartridge	4 pcs.
Mixing Tips, medium	20 pcs.
Oral Tips	20 pcs.

#### 6022 PRESIDENT JET Bite

Single pack	
25 ml cartridge	4 pcs.
Mixing Tips, medium	20 pcs.
Spreader Tips	20 pcs.

#### 6042 PRESIDENT JET Bite hard

Single pack	
25 ml cartridge	4 pcs.
Mixing Tips, medium	20 pcs.
Spreader Tips	20 pcs.

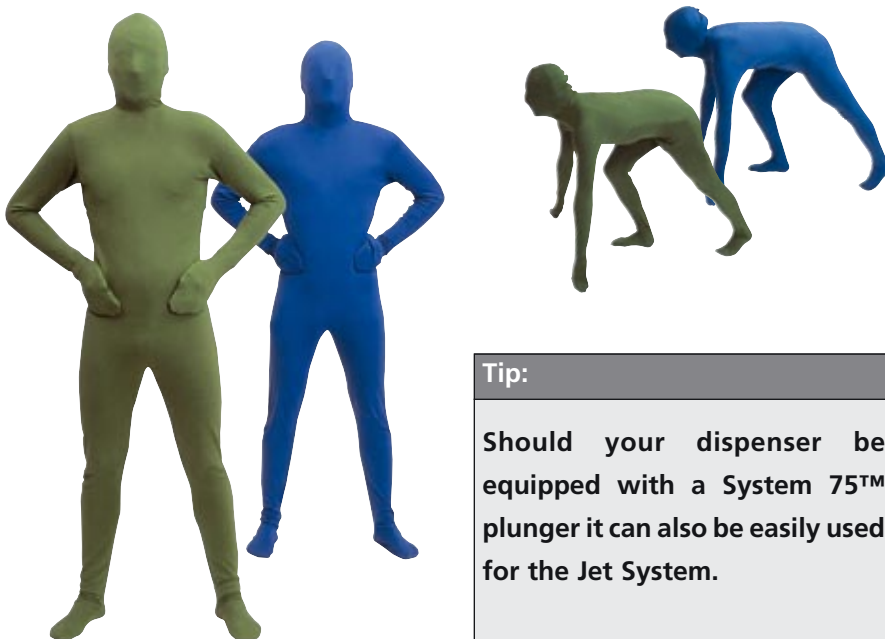
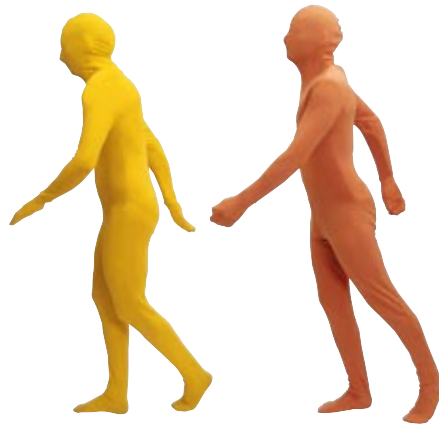
### Accessories

6270 microSystem™ dispenser MKII	1 pc.
6202 MT/GREEN/green/white/70/S	40 pcs.
6214 MT/clear/clear/white/70/S	40 pcs.
6210 Oral Tips	100 pcs.
6223 Spreader Tips	100 pcs.

# PRESIDENT JET System

The "wash" materials: PRESIDENT light and regular body can be applied in combination with President putty as well as President System75™ materials as all product characteristics are perfectly balanced.

The bite registration materials Jet Bite and Jet Bite hard are also available in conventional 48 ml cartridges.



**Tip:**  
Should your dispenser be equipped with a System 75™ plunger it can also be easily used for the Jet System.

## ORDER INFORMATION

### PRESIDENT JET

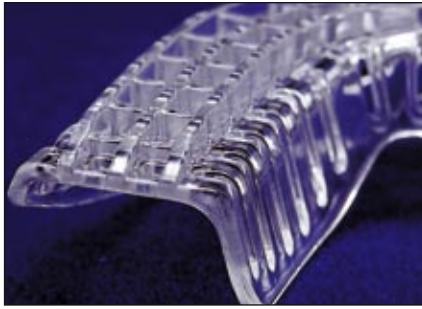
4600	<b>PRESIDENT JET light body</b>	
	Single pack	
	48 ml JET cartridge	2 pcs.
	JET Mixing Tips	12 pcs.
4605	<b>PRESIDENT JET regular body</b>	
	Single pack	
	48 ml JET cartridge	2 pcs.
	JET Mixing Tips	12 pcs.
4655	<b>PRESIDENT JET JET Bite</b>	
	Single pack	
	48 ml JET cartridge	2 pcs.
	JET Mixing Tips	12 pcs.
	Spreader Tips	12 pcs.
4685	<b>PRESIDENT JET JET Bite hard</b>	
	Single pack	
	48 ml JET cartridge	2 pcs.
	JET Mixing Tips	12 pcs.
	Spreader Tips	12 pcs.

### Accessories

4830	MT/CLEAR/CLEAR/WHITE/79/S	48 pcs.
4832	MT/CLEAR/CLEAR/WHITE/86/S	48 pcs.
4831	JET Oral Tips	96 pcs.
6223	Spreader Tips	100 pcs.

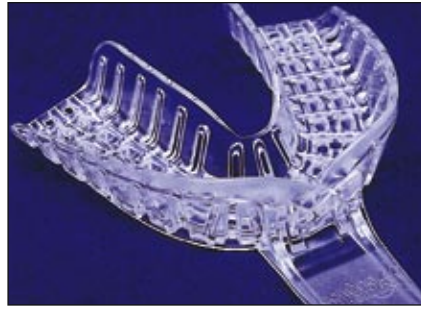
# PRESIDENT Impression trays

If they weren't transparent one would think they were made of steel.



### Rigid by design

A patented system of intersecting ribs and rails provides unprecedented rigidity in a plastic tray.



### Anatomically correct

A statistical database accumulated over 20 years has enabled Coltène/Whaledent® to define the ideal form for each tray size.



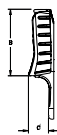
### Built-in retention

The President® Trays System's design aggressively retains all types of impression materials.



### Tip:

By warming up or mechanical abrasion (e.g. milling unit) President trays can easily be converted into custom-made trays.



Size	DIMENSIONS					
	A		B		C	
1	3.270"	83.1 mm	2.490"	63.2 mm	.738"	18.7 mm
2	3.147"	79.9 mm	2.450"	62.2 mm	.788"	20.0 mm
3	2.968"	75.4 mm	2.295"	58.3 mm	.683"	17.3 mm
4	2.738"	69.5 mm	2.303"	58.5 mm	.759"	19.3 mm
5	2.741"	69.6 mm	2.036"	51.7 mm	.671"	17.1 mm
6	2.431"	61.7 mm	1.990"	50.5 mm	.720"	18.3 mm
7	1.854"	47.1 mm	2.303"	58.5 mm	.759"	19.3 mm
8	1.854"	47.1 mm	2.303"	58.5 mm	.759"	19.3 mm
9	2.569"	65.3 mm	1.554"	39.4 mm	.756"	19.2 mm

## ORDER INFORMATION

### PRESIDENT Trays

6910 Assortment pack	1 tray per size	9 pcs.
6901 # 1 Large Upper		12 pcs.
6902 # 2 Large Lower		12 pcs.
6903 # 3 Medium Upper		12 pcs.
6904 # 4 Medium Lower		12 pcs.
6905 # 5 Small Upper		12 pcs.
6906 # 6 Small Lower		12 pcs.
6907 # 7 Quadrant-UL/lr		12 pcs.
6908 # 8 Quadrant-UR/LL		12 pcs.
6909 # 9 Anterior		12 pcs.

# PRESIDENT SYSTEM 75™

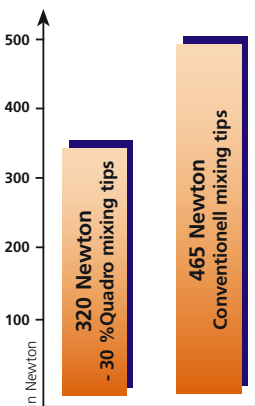
PRESIDENT System 75™ is available in both heavy body tray material and MonoBody single phase materials. Both materials can easily be combined with President light and regular body.



Easy mixing system: With your conventional dispenser you fill the tray directly from the cartridge with no additional effort. You just need a longer plunger (in the starter kit or available separately) or a dispenser with integrated, long plunger (can also be used for the Jet 48 ml cartridges).

The 75 ml cartridge facilitates efficient application as it contains 50% more material than conventional cartridges and therefore needs to be changed less frequently. This also reduces waste. No contamination is caused with latex gloves thanks to the Automix design.

## Minimal extrusion force with QUADRO mixing tips.



### Minimal squeezing force

The new Quadro mixing tip reduces the necessary extrusion force by 30% and allows easy and convenient tray filling not found with conventional tips.



### Less material loss

The quadratic and compact shape of the Quadro mixing tip gives up to 22% less material waste compared to earlier mixing tip designs.

+ 15 %



### Faster tray filling

More perfectly mixed PRESIDENT heavy body can be squeezed out with every stroke.



Outflow channels are set apart and are combined with a safety reservoir which avoids undesirable contamination of material flowing back. A premature contact of both materials and subsequent polymerisation is prevented with the mixing tip.



The construction and design of the QUADRO mixing tip reduce the force required to extrude „heavy“ impression materials by about one third. It also dispenses 15 % more material with each squeeze of the trigger for faster and more convenient tray loading. It also results in more efficient mixing and reduces waste by 22%.

## ORDER INFORMATION

### PRESIDENT System 75™

6702	<b>PRESIDENT System 75™ heavy body</b>	
	Single pack	
	75 ml cartridge	2 pcs.
	QUADRO Mixing Tips	8 pcs.
6752	<b>PRESIDENT System 75™ MonoBody</b>	
	Single pack	
	75 ml cartridge	2 pcs.
	Mixing Tips	10 pcs.

### Accessories

6975	System 75™ plunger	1 pc.
6962	QUADRO Mixing Tips for System 75™	40 pcs.
4426	Coltène impression syringes	
	Syringes	3 pcs.
	Syringe Tips	15 pcs.

# PRESIDENT putties

## putty and putty soft

- Indications:**
- Study models
  - Orthodontic models
  - Matrices
  - Protection of teeth during investment of denture castings
  - keys



Choose between putty and putty soft! putty soft is available as a fast version too. All putty materials are noted for their easy mixing and are compatible with all President "wash" materials.

NEW! For safety all putty tubs come in containers with tamper proof lid.

On page 28 you will find out more about final hardness and setting times.

### ORDER INFORMATION

#### PRESIDENT putty

4617	<b>PRESIDENT putty</b>	
	Single pack	
	Base and catalyst	each 300 ml
4610	<b>PRESIDENT putty</b>	
	Trial Kit	
	Base and catalyst	each 75 ml
4843	<b>PRESIDENT putty soft</b>	
	Single pack	
	Base and catalyst	each 300 ml
4835	<b>PRESIDENT putty soft</b>	
	Trial Kit	
	Base and catalyst	each 75 ml
4632	<b>PRESIDENT fast putty soft</b>	
	Single pack	
	Base and catalyst	each 300 ml

#### Accessories

4420	Cutting knife righthanded	1 pc.
4421	Cutting knife lefthanded	1 pc.
4410	Coltène Adhesive for tray 10 ml bottle	1 pc.

# PRESIDENT System 360

## heavy body

PRESIDENT heavy body tray material is also available in a foil bag. The foil bags with the reusable support cartridge fits into all appropriate dosing- and mixing devices.

The cutting device which is integrated into the foil bag facilitates hygienic and easy handling; insert and extrude.



Compatible with all President wash materials.

### ORDER INFORMATION

#### PRESIDENT System 360

6100	<b>PRESIDENT System 360</b>	
	<b>heavy body</b>	
	Starter Kit	
	Base	300 ml
	Catalyst	62 ml
	Supporting cartridge	1 pc.
	Dynamic mixing tips	10 pcs.
6105	<b>PRESIDENT System 360</b>	
	<b>heavy body</b>	
	Single pack	
	Base	2 x 300 ml
	Catalyst	2 x 62 ml

#### Accessories

6160	<b>PRESIDENT System 360</b>	
	Supporting cartridge	1 pc.
6161	<b>PRESIDENT System 360</b>	
	Dynamic mixing tips	40 pcs.

# PRESIDENT Tube material

All described techniques and indications are naturally also possible with the appropriate President tube materials.



PRESIDENT tube material is also surface activated and indicated as such. Only base and catalysts of the same batch may be used. Original formula tube material may not be mixed with surface activated material.

Available as tray material heavy body and wash materials light or regular body.

## ORDER INFORMATION

### Products of PRESIDENT Tube materials

4667	<b>PRESIDENT light body</b>	
	Single pack	
	Base and catalyst	106 ml
4717	<b>PRESIDENT regular body</b>	
	Single pack	
	Base and catalyst	106 ml
4767	<b>PRESIDENT heavy body</b>	
	Single pack	
	Base and catalyst	106 ml

### Accessories

4422	Coltène Coltopress	
	Squeezing aid for tubes	1 pc.
4414	Coltène Mixing pad	10 pcs.
4415	Coltène Mixing Spatula	1 pc.
4418	Coltène syringes	
	one way use	50 pcs.
4426	Coltène impression syringes	
	with 15 tips	3 pcs.
4428	Coltène refill pack	
	syringe Tips	50 pcs.





#### Tip:

**The President Coltopress empties tubes without waste!**







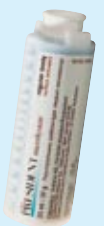










Should you prefer to use PRESIDENT putties as a tray material, this can easily be used instead of heavy body.



# PRESIDENT Automix Cartridge System Overview

<p><b>System 75™ Tray material</b></p>  <p><b>Art. 4800</b> JET dispenser <b>Art. 6975</b> Plunger</p>	 <p><b>Art. 6702</b> PRESIDENT System 75™ heavy body, 2 x 75 ml / 8 mixing tips</p>	 <p><b>Art. 6962</b> 40 QUADRO Mixing Tips</p>
<p><b>Single phase impression material</b> <b>Double mix impression material</b></p>	 <p><b>Art. 4600</b> PRESIDENT JET light body 2 x 48 ml / 12 JET Mixing Tips</p>	 <p><b>Art. 6972</b> 40 System 75™ Mixing Tips</p>
<p><b>Wash material in the JET System</b></p>	 <p><b>Art. 4605</b> PRESIDENT JET regular body 2 x 48 ml / 12 JET Mixing Tips</p>	 <p><b>Art. 4830</b> 48 JET Mixing Tips light body</p>
<p><b>Bite registration in the JET System</b></p>		 <p><b>Art. 4831</b> 96 JET Oral Tips</p>



<p><b>Wash impression material in the microSystem™</b></p>  <p><b>Art. 6270</b> microSystem™ dispenser MKII</p>	 <p><b>Art. 4655</b> PRESIDENT JET Bite, 2 x 48 ml 12 JET Mixing Tips / 12 Spreader Tips</p>	 <p><b>Art. 4685</b> PRESIDENT JET Bite hard 2 x 48 ml / 12 JET Mixing Tips / 12 Spreader Tips</p>	 <p><b>Art. 4830</b> 48 JET Mixing Tips light body</p>	 <p><b>Art. 4833</b> 36 Spreader Tips 36 JET Mixing Tips light body</p>
<p><b>Bite registration in the microSystem™</b></p>	 <p><b>Art. 6002</b> PRESIDENT microSystem™ light body 4 x 25 ml / 20 Mixing Tips, small 20 Oral Tips</p>	 <p><b>Art. 6012</b> PRESIDENT microSystem™ regular body 4 x 25 ml / 20 Mixing Tips, medium 20 Oral Tips</p>	 <p><b>Art. 6202</b> 40 Mixing Tips, small <b>Art. 6205</b> 100 Mixing Tips, small</p>	 <p><b>Art. 6210</b> 100 Oral Tips</p>
<p><b>Bite registration in the microSystem™</b></p>	 <p><b>Art. 6022</b> PRESIDENT microSystem™ JET Bite 4 x 25 ml / 20 Mixing Tips, medium 20 Spreader Tips</p>	 <p><b>Art. 6042</b> PRESIDENT microSystem™ JET Bite hard 4 x 25 ml / 20 Mixing Tips, medium 20 Spreader Tips</p>	 <p><b>Art. 6214</b> 40 Mixing Tips, medium <b>Art. 6215</b> 100 Mixing Tips, medium</p>	 <p><b>Art. 6210</b> 100 Oral Tips</p>
<p><b>Tray material System 360 for bulk-, dosing and mixing devices</b></p>	 <p><b>Art. 6100</b> PRESIDENT System 360 heavy body Starter Kit, 300 ml base, 62 ml catalyst, 1 Supporting cartridge 10 Dynamic Mixing Tips</p>	 <p><b>Art. 6105</b> PRESIDENT System 360 heavy body Single pack 2 x 300 ml base, 2 x 62 ml catalyst</p>	 <p><b>Art. 6161</b> PRESIDENT System 360 Dynamic Mixing Tips (40 pcs.)</p>	 <p><b>Art. 6160</b> PRESIDENT System 360 Supporting cartridge</p>



## PRESIDENT microSystem™

<b>6001 PRESIDENT microSystem™</b>		
Starter Kit		
25 ml cartridge light body	1 pc.	
25 ml cartridge regular body	1 pc.	
25 ml cartridge JET Bite	1 pc.	
MT/GREEN/GREEN/WHITE/70/S*	5 pcs.	
MT/CLEAR/CLEAR/WHITE/70/S*	10 pcs.	
Oral Tips	10 pcs.	
Spreader Tips	5 pcs.	
microSystem™ dispenser MKII	1 pc.	
<b>6002 PRESIDENT microSystem™</b>		
<b>light body</b>		
Single pack		
25 ml cartridge	4 pcs.	
MT/GREEN/GREEN/WHITE/70/S*	20 pcs.	
Oral Tips	20 pcs.	
<b>6012 PRESIDENT microSystem™</b>		
<b>regular body</b>		
Single pack		
25 ml cartridge	4 pcs.	
MT/CLEAR/CLEAR/WHITE/70/S*	20 pcs.	
Oral Tips	20 pcs.	
<b>6022 PRESIDENT JET Bite</b>		
Single pack		
25 ml cartridge	4 pcs.	
MT/CLEAR/CLEAR/WHITE/86/S*	20 pcs.	
Spreader Tips	20 pcs.	
<b>6042 PRESIDENT JET Bite hard</b>		
Single pack		
25 ml cartridge	4 pcs.	
MT/CLEAR/CLEAR/WHITE/86/S*	20 pcs.	
Spreader Tips	20 pcs.	

## Accessories

6270 microSystem™ dispenser MKII	1 pc.
6202 MT/GREEN/GREEN/WHITE/70/S*	40 pcs.
6214 MT/CLEAR/CLEAR/WHITE/70/S*	40 pcs.
6210 Oral Tips	100 pcs.
6223 Spreader Tips	100 pcs.

## PRESIDENT Trays

6910 Assortment pack	9 pcs.
1 tray per size	
6901 # 1 Large Upper	12 pcs.
6902 # 2 Large Lower	12 pcs.
6903 # 3 Medium Upper	12 pcs.
6904 # 4 Medium Lower	12 pcs.
6905 # 5 Small Upper	12 pcs.
6906 # 6 Small Lower	12 pcs.
6907 # 7 Quadrant	12 pcs.
UL/LR	
6908 # 8 Quadrant	12 pcs.
UR/LL	
6909 # 9 Anterior	12 pcs.

## PRESIDENT System 360

<b>6100 PRESIDENT System 360</b>		
<b>heavy body</b>		
Starter Kit		
Base	300 ml	
Catalyst	62 ml	
Supporting cartridge	1 pc.	
MT/GREEN/CLEAR/WHITE/50/S*	40 pcs.	
<b>6105 PRESIDENT System 360</b>		
<b>heavy body</b>		
Single pack		
Base	2 x 300 ml	
Catalyst	2 x 62 ml	

## Accessories

<b>6160 PRESIDENT System 360</b>		
Supporting cartridge	1 pc.	
<b>6161 PRESIDENT System 360</b>		
MT/GREEN/CLEAR/WHITE/50/S*	40 pcs.	

\* MT = Mixing Tip  
P = Pointed  
S = Straight



## PRESIDENT JET

4600 **PRESIDENT JET light body**  
Single pack  
48 ml JET cartridge 2 pcs.  
MT/CLEAR/CLEAR/WHITE/79/S\* 12 pcs.

4605 **PRESIDENT JET regular body**  
Single pack  
48 ml JET cartridge 2 pcs.  
MT/CLEAR/CLEAR/WHITE/86/S\* 12 pcs.

4655 **PRESIDENT JET JET Bite**  
Single pack  
JET cartridge 48 ml  
MT/CLEAR/CLEAR/WHITE/79/S\* 12 pcs.  
Spreader Tips 12 pcs.

4685 **PRESIDENT JET JET Bite hard**  
Single pack  
48 ml cartridge 2 pcs.  
MT/CLEAR/CLEAR/WHITE/86/S\* 12 pcs.  
Spreader Tips 12 pcs.

## Accessories

4830 MT/CLEAR/CLEAR/WHITE/79/S\* 48 pcs.  
4832 MT/CLEAR/CLEAR/WHITE/86/S\* 48 pcs.  
4831 JET Oral Tips 96 pcs.  
6223 Spreader Tips 100 pcs.

## PRESIDENT System 75™

6702 **PRESIDENT System 75™ heavy body**  
Single pack  
75 ml cartridge 2 pcs.  
MT/CLEAR/CLEAR/WHITE/73/S\* 8 pcs.

6752 **PRESIDENT System 75™ MonoBody**  
Single pack  
75 ml cartridge 2 pcs.  
MT/CLEAR/CLEAR/WHITE/73/S\* 10 pcs.

## Accessories

6962 MT/CLEAR/CLEAR/WHITE/73/S\* 40 pcs.  
4426 Coltène impression syringes with 15 tips 3 pcs.

## PRESIDENT putty

4617 **PRESIDENT putty**  
Single pack  
Base and catalyst each 300 ml  
4610 **PRESIDENT putty**  
Trial Kit  
Base and catalyst each 75 ml  
4843 **PRESIDENT putty soft**  
Single pack  
Base and catalyst each 300 ml  
4835 **PRESIDENT putty soft**  
Trial Kit  
Base and catalyst each 75 ml  
4632 **PRESIDENT fast putty soft**  
Single pack  
Base and catalyst each 300 ml

## Accessories

4420 Cutting knife righthanded 1 pc.  
4421 Cutting knife lefthanded 1 pc.  
4410 Coltène Adhesive for tray 10 ml bottle 1 pc.

## PRESIDENT Tube material

4767 **PRESIDENT heavy body**  
Single pack  
Base and catalyst 106 ml  
4667 **PRESIDENT light body**  
Single pack  
Base and catalyst 106 ml  
4717 **PRESIDENT regular body**  
Single pack  
Base and catalyst 106 ml

## Accessories

4422 Coltène Coltopress  
Squeezing aid for tubes 1 pc.  
4414 Coltène Mixing pad 10 pcs.  
4415 Coltène Mixing Spatula 1 pc.  
4418 Coltène syringes  
one way use 50 pcs.  
4426 Coltène impression syringes  
with 15 tips 3 pcs.  
4428 Coltène Refill pack  
syringe tips 50 pcs.

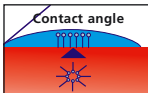
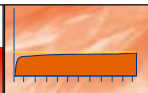
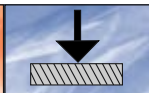
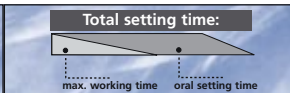
# Technical feature's of all PRESIDENT PVS impression materials (addition type)

## Description to the following criteria:

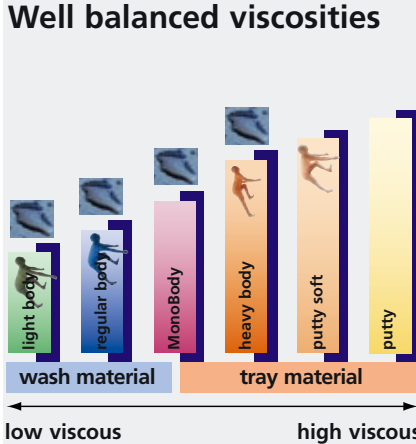
- The surface activated (hydrophilic) properties are caused by surfactants blended with the material. As soon as the material contacts humidity, these molecules lead to improved wettability. The ideal contact angle is 40° - 60° for a perfect impression in a moist environment.

A contact angle lower than 40° offers better surface activation but rises the danger of lower dimensional stability by swelling of the impression material with water in certain case.

- High dimensional stability from the starting point! The Coltène quality standard of a maximum of 0.2% shrinkage is well below the 1,5 % ISO standard. High tear strength and elasticity guarantee impeccable impressions

coltène® <b>PRESIDENT</b>	 Contact angle in °	 Dimensional stability in %	 End hardness in Shore A	 Total setting time		
				Mixing time	Working time	Time in the mouth
<b>System 75™/System 360*</b>						
heavy body *	40 - 60	≤ 0.2	65	5 s	1'30 s	3'30 s
heavy body <i>fast</i>	40 - 60	≤ 0.2	65	5 s	1'00 s	2'00 s
MonoBody	40 - 60	≤ 0.2	60	5 s	1'30 s	3'30 s
<b>putty</b>						
putty	-	≤ 0.2	75	45 s	2'10 s	3'00 s
putty soft	-	≤ 0.2	63	45 s	2'10 s	3'00 s
putty soft <i>fast</i>	-	≤ 0.2	63	30 s	2'00 s	2'00 s
<b>JET/microSystem™</b>						
light body	40 - 60	≤ 0.2	50	5 s	1'30 s	3'30 s
regular body	40 - 60	≤ 0.2	55	5 s	1'30 s	3'30 s
Jet Bite	-	≤ 0.2	78	5 s	50 s	1'30 s
Jet Bite hard	-	≤ 0.2	90	5 s	30 s	1'00 s
<b>Tubes</b>						
heavy body	40 - 60	≤ 0.2	60	45 s	2'10 s	3'00 s
regular body	40 - 60	≤ 0.2	55	45 s	2'10 s	3'00 s
light body	40 - 60	≤ 0.2	50	45 s	2'10 s	3'00 s

### Well balanced viscosities



low viscous → high viscous

Surface activated materials.

Available as a faster setting „fast“ version too.

The outstanding compatibility ensures an harmonic interplay of the different viscosities of the PRESIDENT wash and tray materials and perfect impressions in the technique and viscosity of your choice.